



Tool+Cutter
Specialists in Cutting Tools Since 1969

LONDON
☎ 519-681-5600
1-800-265-6056

NIAGARA
☎ 905-684-6571
1-800-567-0617

WOODSTOCK
☎ 519-421-9730
1-800-565-2603

www.toolandcutter.com



HELIDO
865 LINE

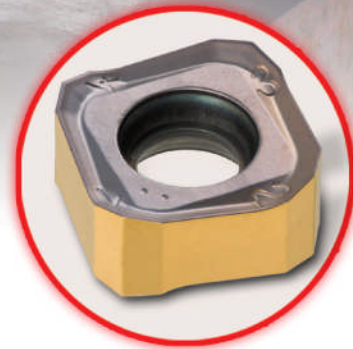
Offer A

Purchase

50 HELIDO 65 inserts S865 SNMU 13

Receive

**1 corresponding face mill cutter
S865 up to 4" FREE**



Increasing Your
PROFITABILITY
Milling Intelligently



Valid from April 1 until August 31, 2010

Member IMC Group
ISCAR
www.iscar.ca



Tool+Cutter
Specialists in Cutting Tools Since 1969

LONDON
☎ 519-681-5600
1-800-265-6056

NIAGARA
☎ 905-684-6571
1-800-567-0617

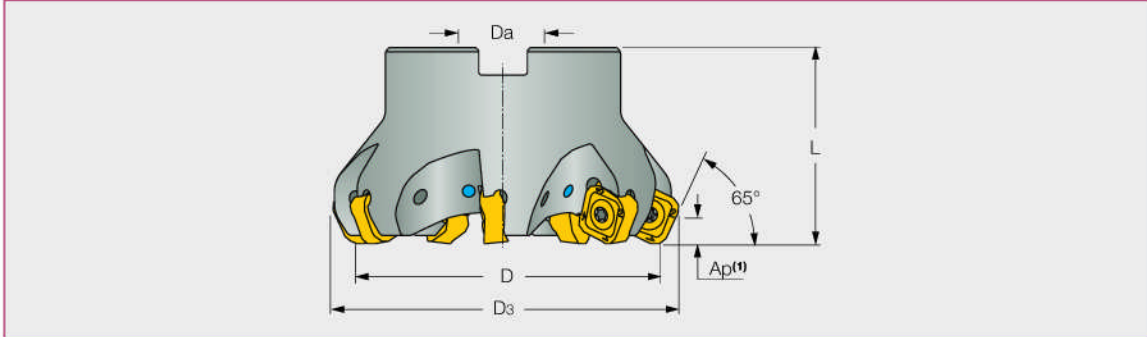
WOODSTOCK
☎ 519-421-9730
1-800-565-2603

www.toolandcutter.com



HELIDO
865 LINE

S865 FSN...R13



S865 FSN...R13 Screw Clamped 65° Face Mills

Designation	D	D ₂	Z	Da	L	Note	Arbor Style	Coolant Holes	Kg
S865 FSN D050-04-22-R13	50	59.7	4	22	40		A	●	0.4
S865 FSN D050-06-22-R13	50	59.7	6	22	40	Fine Pitch	A	●	0.35
S865 FSN D063-06-22-R13	63	72.7	6	22	40		A	●	0.5
S865 FSN D063-08-22-R13	63	72.7	8	22	40	Fine Pitch	B	●	0.5
S865 FSN D080-07-27-R13	80	89.7	7	27	50		B	●	0.9
S865 FSN D080-10-27-R13	80	89.7	10	27	50	Fine Pitch	B	●	0.9
S865 FSN D100-08-32-R13	100	109.7	8	32	50		B	●	1.4
S865 FSN D100-12-32-R13	100	109.7	12	32	50	Fine Pitch	B	●	1.36
S865 FSN D125-10-40-R13	125	134.7	10	40	63		B	●	2.6
S865 FSN D125-16-40-R13	125	134.7	16	40	63	Fine Pitch	B	●	2.6

Spare parts

Screw: SR 11800745
Key: BLD IP15/S7
Handle: SW6-T SHORT

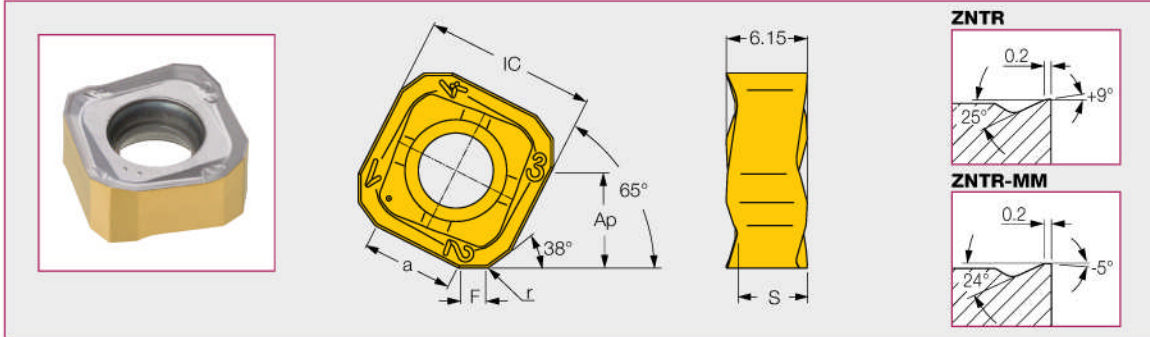
- ⁽¹⁾ Recommended Ap for general applications is 6 mm.
Recommended Ap max on steel applications with coarse pitch cutters and on cast iron with fine pitch cutters may be raised up to 8 mm.

Valid from April 1 until August 31, 2010

Member IMC Group
ISCAR
www.iscar.ca



S865 SNMU 1305ZNTR...



S865 SNMU 1305ZNTR... Square, Double-Sided Inserts with 8 Cutting Edges Hard ← → Tough

Designation	di	S	Ap ⁽¹⁾	a	F	r	Hard ← → Tough				
							IC5100	IC808	IC810	IC830	IC330
S865 SNMU 1305ZNTR	13.00	5.5	8	7	2.0	0.5	●	●	●	●	●
S865 SNMU 1305ZNTR-MM	13.00	5.5	8	7	2.0	0.5	●	●	●	●	●
P Steel								✓	✓	✓	✓
M Stainless Steel								✓	✓	✓	✓
K Cast Iron							✓	✓	✓	✓	✓
S High Temp. Alloys								✓	✓	✓	✓
H Hardened Steel								✓	✓		

⁽¹⁾ Recommended Ap for general applications is 6 mm.
Recommended Ap max on steel applications with coarse pitch cutters and on cast iron with fine pitch cutters may be raised up to 8 mm.

Tool Types

1 S865 FSN

Type of Machining

fz (mm/t)

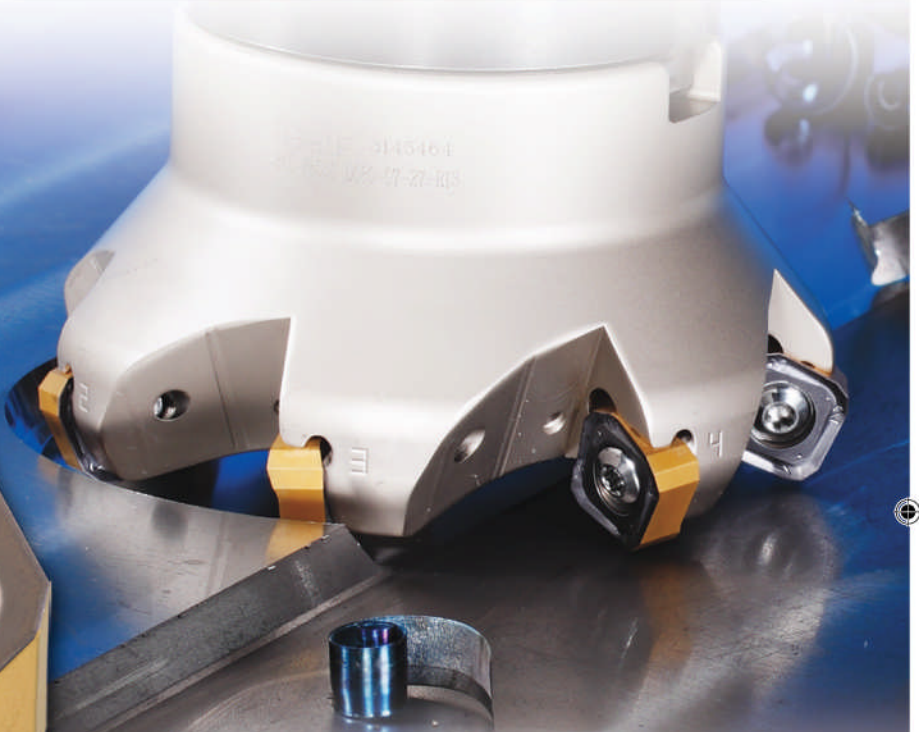
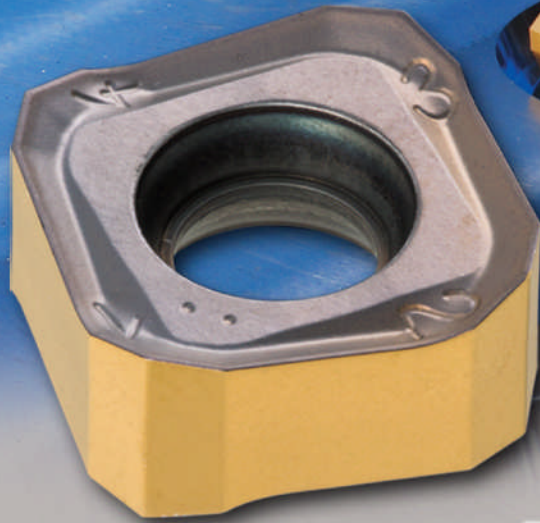
Ap	Light	Medium	Heavy
6 mm	0.10	0.15	0.25
4 mm	0.15	0.20	0.30
2 mm	0.20	0.25	0.35

Diagram showing a square insert with dimensions Ap (vertical) and fz (horizontal).

Valid from April 1 until August 31, 2010

Building Customer **PROFITABILITY** Parting Intelligently

3P Productivity
Performance □ Profitability



HELIDO
865 LINE

**Milling Down Production Costs.
Economical Double Sided
Positive Inserts with
8 Cutting Edges.**

Member IMC Group
ISCAR
www.iscar.ca