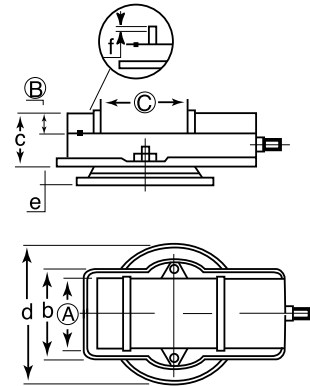
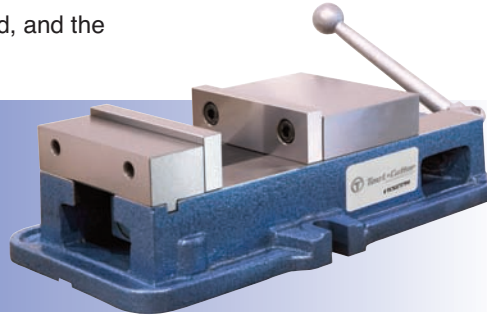


# **HOLD IT!** With Tool & Cutter Brand Precision Milling Vises

## Milling Machine Vise Features:

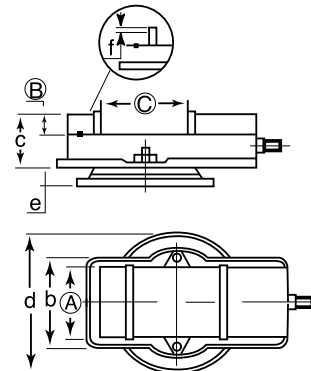
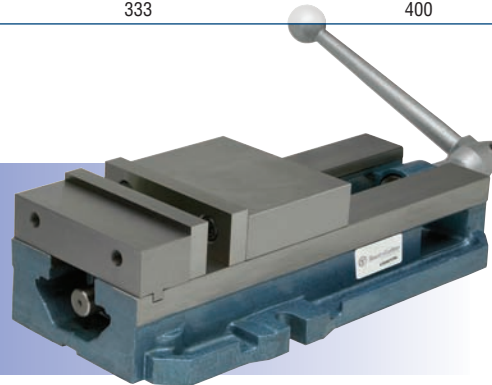
- Vises are Matched
- An integral key and large fasteners reduces deflection by 50%
- All these make the GS 890" vise an industrial standard accessory
- 4 jaw plate positions allow extra capacity with the jaw plates in the outside position
- Chips cover protect leadscrew from damage
- The other quality movable jaw does not lift off the bed, and the deflection of the stationary jaw is minimized

**6" x 7.5" opening**  
**TCS327275M**  
**\$440.00**



Model	A	B	C	O.A.L.	b	c	d	e	f	Plain (Ship Wt. lb/kg)
GS 6"	6	1.77	7.5	17.2	9.13	4.6	12	1.65	0.39	80
	152	45	191	435	232	117	305	42	10	36
<b>CAPACITY</b>	<b>I</b>		<b>II</b>		<b>III</b>		<b>IV</b>			
GS-6"		7-1/2		10-1/4		13-1/8		15-7/8		
		191		260		333		400		

**6" x 8.9" opening**  
**TCS327290M**  
**\$495.00**



Model	A	B	C	O.A.L.	b	c	d	e	f	Plain (Ship Wt. lb/kg)
GS 890	6	1.5	8.9	17.2	8.3	4.6	12	1.7	0.2	80
	153	38	226	437	210	118	305	42	6	36
<b>CAPACITY</b>	<b>I</b>		<b>II</b>		<b>III</b>		<b>IV</b>			
GS-890		8.89"		11.65"		14.44"		17.24"		
		226		296		367		438		



## Tool+Cutter

"Specialists in Cutting Tools"

**LONDON**

Telephone: 519.681.5600  
Toll-Free: 800.265.6056

**NIAGARA REGION**

905.684.6571  
800.567.0617

**WOODSTOCK**

519.421.9730  
800.565.2603

[www.toolandcutter.com](http://www.toolandcutter.com)

Pricing valid while quantities last