

5T Tool + Cutter

toolandcutter.com

est. 1969

LONDON
 519-681-5600
 1-800-265-6056

NIAGARA
 905-684-6571
 1-800-567-0617

WOODSTOCK
 519-421-9730
 1-800-565-2603

www.toolandcutter.com

Double Clamp Vises



- One handle simultaneously operates two moveable jaws and clamps 2 pieces of workpiece of same or different size or one large workpiece
- The moveable jaw ANTI-LIFT mechanism provides alignment to workpiece without jaw lift
- There are 6 kinds of clamping ways to meet workpieces of different shapes and sizes
- The whole body is precisely ground and height tolerance is within $\pm 0.025\text{mm}$ ($\pm 0.001''$), therefore several vises can be lined up for production
- The rigid construction prevents base distortion



TLD-60G/HV - 6" X 4.9"(2) Openings: \$1,820.00 - Code # 382-600 890 - 6" X 8.9" Opening: \$585.00 - Code # 327-290M

AVAILABLE QUANTITIES - 382-600 1pc - 327-275M - 2pc - 327-290M - 3pc

Precision Machine Vises



- Vises are matched (bed height: 2.875")
- An integral key and large fasteners reduce reflection
- Chip cover protects lead screw
- Moveable jaw does not lift off the bed
- Interchangeable soft jaws

10 year warranty



675 - 6" X 7.5" Opening: \$514.00 - Code # 327-275M

TLD-60G/HV - 6" X 4.9"(2) Openings: \$1,820.00 - Code # 382-600 890 - 6" X 8.9" Opening: \$585.00 - Code # 327-290M

AVAILABLE QUANTITIES - 382-600 1pc - 327-275M - 2pc - 327-290M - 3pc

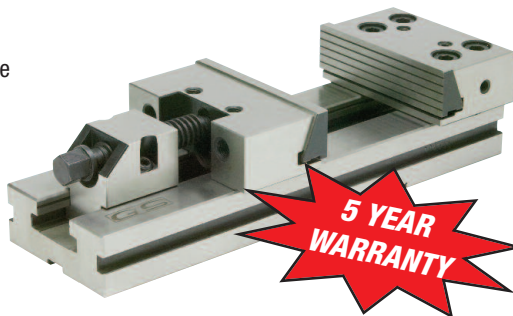
Plain Base Modular Vises



Manufactured under rigid quality control. As a result of the high standard construction, GS Vises can be depended upon to maintain their accuracy under the most severe operating conditions. The modular design and the concept of interchangeability makes possible a wide variety of set up combinations.

Features/Benefits:

- High accuracy
- Unlimited clamping range
- High quality alloy steel
- High clamping pressure
- No jaw lift
- All vises are matched



5 YEAR WARRANTY

*Warranty is against manufacturing defects only

Model	Jaw Width	Opening	Jaw Height	Code No.	SALE \$
3	6"	12"	1.97"	382-017	\$1,135.00
4	7"	12"	2.4"	382-025	\$1,459.00
4	7"	16"	2.4"	382-030	\$1,620.00

Multi-tasking Modular Vises For 5th Axis



The MULTITASKING range of vises has been specially designed for 5-axis machines. Working on 5 sides of the workpiece, it allows the best optimization of the machining cycle. Thanks to the compact design this kind of vise can be installed on all machining centers. The use of GRIP jaws is strongly recommended with multitasking vises.

- Self-centering or eccentric
- Eccentric jaw adjustment in steps of 2mm
- Highest accuracy in positioning and alignment ($\pm 0.02\text{mm}$) due to ground rack teeth on both the base and the fixed jaws
- Minimum deflection
- Solid, rigid construction and maximum clamping ratio to the total length
- Positioning through ground holes or keyways
- All case hardened to HRC60 for durability



Model	Jaw Width	Opening	Base Diameter	Code No.	SALE \$
Type 1	74mm	74mm	120mm	382-520	\$2,042.00
Type 2	99mm	104mm	160mm	382-522	\$3,489.00

AVAILABLE QUANTITIES - 382-017 - 1pc - 382-025 - 4pc - 382-030 - 2pc - 382-520 - 1pc - 382-522 - 1pc

5T Tool + Cutter

toolandcutter.com

est. 1969

LONDON
 519-681-5600
 1-800-265-6056

NIAGARA
 905-684-6571
 1-800-567-0617

WOODSTOCK
 519-421-9730
 1-800-565-2603

www.toolandcutter.com

Premium Drill Sharpening Machines

Model DM213

Code No. 326-130
 List Price \$1,940.00

Sale Price \$1,080.00

Drill Diameter: Ø2mm - Ø13mm
 Point Angle: 85° ~ 140°
 Power Supply: AC110 / AC220 50/60HZ
 Motor: 90W
 R.P.M.: 6000RPM
 Weight: 10 kg



DM213
 FAST DRILL RE-SHARPENING MACHINE

Patented Features

- Double-bearing grinding unit (reduces wear).
- Drill tightened design with bearing device.
- Adjustable trimming angle.

Standard Accessories

- ER20 Collets, 2.5mm-13mm (12pcs).
- CBN Dia. wheel #200x1pc (for HSS drill).
- 3mm and 4mm Hexagon (Hex.) wrench x 1 pc each.

Model DM1226

Code No. 326-134
 List Price \$4,414.40

Sale Price \$2,559.00

Drill Diameter: Ø8mm - Ø30mm
 Point Angle: 85° ~ 140°
 Power Supply: AC110 / AC220 50/60HZ
 Motor: 450W
 R.P.M.: 4000RPM
 Weight: 25 kg



DM1226
 FAST DRILL RE-SHARPENING MACHINE

Patented Features

- Double-bearing grinding unit (reduces wear).
- Drill tightened design with bearing device.
- Adjustable trimming angle.

Standard Accessories

- ER40 Collets, 12mm-26mm (15pcs).
- CBN Dia. wheel #200x1pc (for HSS drill).
- 3mm and 4mm Hexagon (Hex.) wrench x 1 pc each.

Economy Machinist Clamping Kit

Means Great Savings!

TE-CO Tooling Components and Sowa Tool are offering an economy line of Machinist Clamp Kits at substantial savings. Of course, the same quality and high standards of the TE-CO Premium Kits are also found in these kits. The only difference between the two is that the economy line has no TE-CO logo, no flats on studs, no t-slot cleaner, and stud threads are rolled, not cut. What you will find though, is a nice price tag.

Code: 608-000
 Each set includes:

- 6 T-slot nuts
- 6 flange nuts
- 4 coupling nuts
- 6 step blocks
- 6 serrated end clamps
- 24 studs, 4 each of 3", 4", 5", 6", 7", 8"
- 1/2-13 x 5/8" table slot
- 1 plastic holder



\$195.20

Promo Code: 500-340



FREE with every purchase of the 608-000.

9pc Combination Wrench Set

- Code: 505-001
- 1/4" - 3/4"
 - Mirror polished
 - Drop forged
 - Hardened and tempered

Reg. list: \$49.20

