



**Tool+Cutter**  
Specialists in Cutting Tools Since 1969

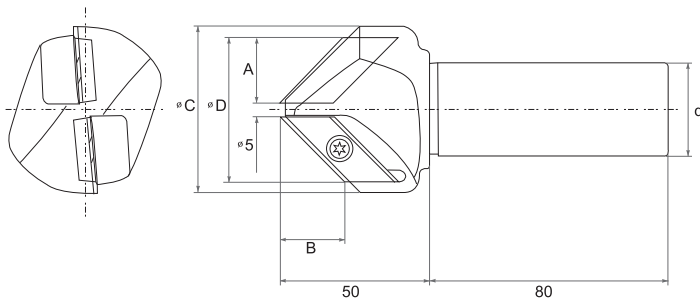
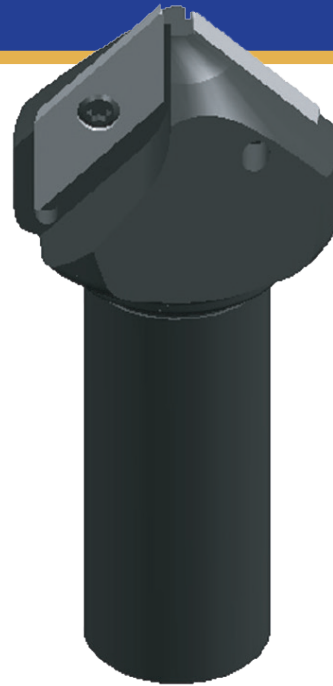
LONDON                      NIAGARA                      WOODSTOCK  
 T 519-681-5600              T 905-684-6571              T 519-421-9730  
 F 519-681-8688              F 905-684-2286              F 519-421-9285  
 1-800-265-6056              1-800-567-0617              1-800-565-2603

[www.toolandcutter.com](http://www.toolandcutter.com)



# SSANGYONG CHAMFER MILL

Designed for large chamfers and Countersinking



**NEW  
SCW300  
AlTiN Coated**

Up to  
**50%**

**LONGER  
TOOL LIFE**

than TiN coated inserts.

**ALL IN STOCK  
AT  
TOOL & CUTTER**

PARTNUMBER	DIMENSIONS						NUMBER OF TEETH	PRICE
	INCL. ANGLE	A	B	ØC	ØD	d		
TER3000007	60°	0.610"	1.004"	1.850"	1.690"	1.000"	2	\$258.00
TER3000008	82°	0.807"	0.807"	2.200"	1.810"	1.000"	2	\$258.00
TER3000009	90°	0.866"	0.807"	2.200"	1.810"	1.000"	2	\$258.00
TER3000010	120°	1.043"	0.590"	2.830"	2.170"	1.000"	2	\$300.00

Work Material	Feed (IPT)	Speed (RPM)
<b>Carbon Steels</b>	<b>.004 ~ .010"</b>	<b>3000 RPM (1000 ~ 4400 RPM)</b>
<b>Stainless Steels</b>		
<b>Cast Irons</b>		
<b>Die Steels</b>	<b>.004 ~ .008"</b>	
<b>Alloy Steels</b>		

**Spare Screws  
#TER3000011**

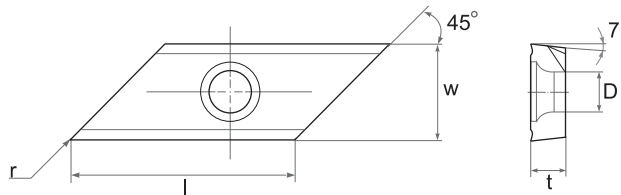
**\$5.99  
each**

**Inserts sold in**

**PACKS  
OF  
FIVE**

### Inserts

TER3000001 - SCW300 AlTiN coated carbide for higher speed applications



INSERT	DIMENSIONS					GRADE & PRICE	
	l	w	t	D	r	SCW00	
XCET 031040 ER	0.866"	0.500"	0.177"	0.220"	0.016"		\$51.00