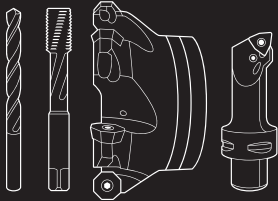


# 2024 Promotion

Free drill body with insert purchase, details below



Incomparably tough in all working conditions

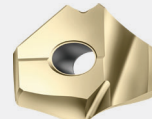
## D4140

### PROGRAM BENEFITS

- Maximum process reliability and tool life with coolant applied directly at the cutting edge
- Performance close to solid carbide drills with ground and polished flutes
  - Efficient and reliable chip evacuation due to polished flutes
  - Long tool life for the drill body due to reduced friction at the hardened and polished flute surface
- Simple indexable insert selection with Color Select

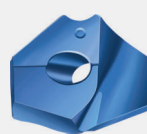


P6006



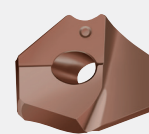
WPP25 specialist for low carbon steels (ISO P)

P6001



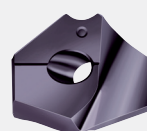
WPP45C ideal for steels (ISO P)

P6005



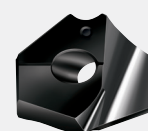
WKK45C ideal for cast irons (ISO K)

P6003



WMP35 ideal for stainless and super alloys (ISO M and ISO S)

P6004



WNN25 ideal for non-ferrous materials (ISO N)

### Promotion Details

Purchase 5 exchangeable tips and get the tool for free. Inserts can be of any grade and geometry but all 5 inserts must fit the tool that you receive for free. Promotion runs from September 15th, 2024 to December 27th, 2024.

Use promo code **DRILLING2024**



**Tool+Cutter**  
Specialists in Cutting Tools Since 1969



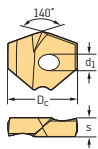
phone - 800-265-6056  
email - support@toolandcutter.com








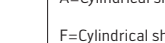




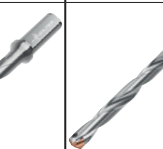

WWW.TOOLANDCUTTER.COM

## Designation key for Walter drilling tools with indexable inserts

<b>D</b>	<b>4</b>	<b>1</b>	<b>40</b>	<b>—</b>	<b>03</b>	<b>—</b>	<b>12.00</b>	<b>F16</b>	<b>—</b>	<b>A</b>
1	2	3	4	5	6	7	8	9		

1	2	3	4	5	6	7	8	9
Tool group	Generation	Tool type	Tool type	Unit of Measure	Drilling depth	Cutting diameter/ clamping diameter	Shank type and size, cylindrical	Insert size/ interface size**
<b>D</b> Drilling		<b>1</b> Cylindrical drill <b>2</b> Chamfer drills	<b>20</b> Indexable insert drill with square indexable insert <b>40</b> Indexable insert drill with P600x exchangeable insert	— Metric . Inch	<b>01</b> $1.3 \times D_c$ <b>02</b> $2 \times D_c / 2.5 \times D_c$ <b>03</b> $3 \times D_c$ <b>04</b> $4 \times D_c$ <b>05</b> $5 \times D_c$ <b>07</b> $7 \times D_c$ <b>10</b> $10 \times D_c$		<b>F16</b> 16 mm <b>F20</b> 20 mm <b>F25</b> 25 mm <b>F32</b> 32 mm <b>F40</b> 40 mm <b>A12</b> 12 mm <b>A16</b> 16 mm <b>A20</b> 20 mm <b>A25</b> 25 mm <b>A13</b> 0.500 inch <b>A15</b> 0.625 inch <b>A19</b> 0.750 inch <b>A26</b> 1.000 inch <b>T14</b> <b>T18</b> T14, T18, T22, T28 are Walter ScrewFit connections <b>T22</b> <b>T28</b>	 Seat size $d_1$ [in] $s$ [in] <b>A</b> 0.118 0.142 <b>B</b> 0.118 0.157 <b>C</b> 0.157 0.177 <b>D</b> 0.157 0.197 <b>E</b> 0.197 0.217 <b>F</b> 0.197 0.236 <b>G</b> 0.197 0.256 <b>H</b> 0.236 0.280 <b>J</b> 0.236 0.303 <b>K</b> 0.236 0.315 <b>M</b> 0.236 0.327 <b>N</b> 0.236 0.339 <b>P</b> 0.236 0.350

## Product range overview of exchangeable-tip drills insert drills

						
Drilling depth	$2.5 \times D_c$	$1.3 \times D_c$	$3 \times D_c$	$5 \times D_c$	$7 \times D_c$	$10 \times D_c$
Designation	D4240-02	D4140-01	D4140	D4140	D4140	D4140
Dia. range [mm]	12–29	12–25.99	12–37.99	12–37.99	12–37.99	18–24.99
Dia. range [in]	0.472-1.023	0.472-1.023	0.472-1.496	0.472-1.496	0.472-1.496	0.472-1.00
						

A=Cylindrical shank  
 F=Cylindrical shank with flat  
 \* shank sizes shown for example only

\* Inserts can be of any grade and geometry but all 5 inserts must fit the tool that you receive for free.

## Drill inserts

Designation	Insert size mm	Insert size in	Seat size**	P	M	K	N	S	Stability of machine, workpiece and clamping arrangement		
				HC	HC	HC	HC	HC			
P6001-D..	12–37.99	0.472-1.496	A–P	WPP25	WPP45C	WMP35	WMP35	WKK45C	WNN25	WMP35	Very good
P6003-D..	12–37.99	0.472-1.496	A–P								
P6004-D..	12–31.5	0.472-1.24	A–K								Good
P6005-D..	12–37.99	0.472-1.496	A–P								
P6006-D..	12–29.5	0.472-1.161	A–J								Moderate

\*\* For insert diameters and seat sizes please reference Walter Catalog

HC = Coated carbide

Walter Technical Compendium



Follow link for technical information on grades and chip breaker geometries