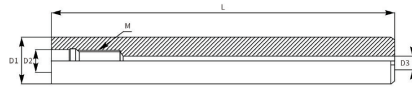
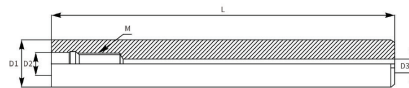


METRIC Carbide Screw-on Shanks - Straight



| EDP Number | Description | Thread | Length | Shank | Price |
|-------------|---------------|--------|--------|-------|-------------------|
| 317-500-107 | CSS10-M06-75 | M6 | 75mm | 10mm | \$136.13 |
| 317-500-108 | CSS10-M06-100 | M6 | 100mm | 10mm | \$130.50 |
| 317-500-109 | CSS10-M06-125 | M6 | 125mm | 10mm | \$169.89 |
| 317-500-110 | CSS10-M06-150 | M6 | 150mm | 10mm | \$163.12 |
| 317-500-111 | CSS12-M06-75 | M6 | 75mm | 12mm | \$138.38 |
| 317-500-112 | CSS12-M06-100 | M6 | 100mm | 12mm | \$132.73 |
| 317-500-113 | CSS12-M06-125 | M6 | 125mm | 12mm | \$200.25 |
| 317-500-114 | CSS12-M06-150 | M6 | 150mm | 12mm | \$193.51 |
| 317-500-115 | CSS16-M08-100 | M8 | 100mm | 16mm | \$229.50 |
| 317-500-116 | CSS16-M08-150 | M8 | 150mm | 16mm | \$264.38 |
| 317-500-117 | CSS16-M08-200 | M8 | 200mm | 16mm | \$351.01 |
| 317-500-118 | CSS20-M10-150 | M10 | 150mm | 20mm | \$294.74 |
| 317-500-119 | CSS20-M10-200 | M10 | 200mm | 20mm | \$533.26 |
| 317-500-120 | CSS20-M10-250 | M10 | 250mm | 20mm | \$630.01 |
| 317-500-121 | CSS25-M12-150 | M12 | 150mm | 25mm | \$569.25 |
| 317-500-122 | CSS25-M12-200 | M12 | 200mm | 25mm | \$736.86 |
| 317-500-123 | CSS25-M12-250 | M12 | 250mm | 25mm | \$874.13 |
| 317-500-124 | CSS25-M12-300 | M12 | 300mm | 25mm | \$1,041.76 |
| 317-500-125 | CSS32-M16-200 | M16 | 200mm | 32mm | \$1,051.85 |
| 317-500-126 | CSS32-M16-250 | M16 | 250mm | 32mm | \$1,356.75 |
| 317-500-127 | CSS32-M16-300 | M16 | 300mm | 32mm | \$1,600.88 |
| 317-500-128 | CSS32-M16-350 | M16 | 350mm | 32mm | \$2,063.23 |
| 317-500-129 | CSS32-M16-400 | M16 | 400mm | 32mm | \$2,359.13 |

Fractional Carbide Screw-on Shanks - Straight



| EDP Number | Description | Thread | Length | Shank | Price |
|--------------|----------------|--------|--------|--------|-----------------|
| 336-06204080 | ICSS2A06204080 | M8 | 4.00" | 0.625" | \$279.00 |
| 336-06206080 | ICSS2A06206080 | M8 | 6.00" | 0.625" | \$389.00 |
| 336-07504100 | ICSS2A07504100 | M10 | 4.00" | 0.750" | \$509.00 |
| 336-07506100 | ICSS2A07506100 | M10 | 6.00" | 0.750" | \$669.00 |
| 336-10004120 | ICSS2A10004120 | M12 | 4.00" | 1.000" | POA |
| 336-10006120 | ICSS2A10006120 | M12 | 6.00" | 1.000" | POA |
| 336-12506160 | ICSS2A12506160 | M16 | 6.00" | 1.250" | POA |

DISTRIBUTED BY:



Tool+Cutter
Specialists in Cutting Tools Since 1969



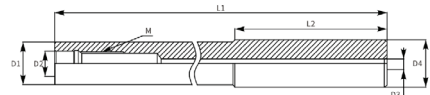
phone - 800-265-6056

email - support@toolandcutter.com



WWW.TOOLANDCUTTER.COM

METRIC Carbide Screw-on Shanks - Necked



| EDP Number | Description | Thread | Length | L2 Length | Shank | Price |
|-------------|--------------------|--------|--------|-----------|-------|-------------------|
| 317-501-107 | CSN10-M06-A25-75 | M6 | 75mm | 50mm | 10mm | \$152.99 |
| 317-501-108 | CSN10-M06-A50-100 | M6 | 100mm | 50mm | 10mm | \$152.99 |
| 317-501-109 | CSN10-M06-A75-125 | M6 | 125mm | 50mm | 10mm | \$192.39 |
| 317-501-110 | CSN10-M06-A100-150 | M6 | 150mm | 50mm | 10mm | \$192.39 |
| 317-501-111 | CSN12-M06-A25-75 | M6 | 75mm | 50mm | 12mm | \$155.24 |
| 317-501-112 | CSN12-M06-A50-100 | M6 | 100mm | 50mm | 12mm | \$155.24 |
| 317-501-113 | CSN12-M06-A75-125 | M6 | 125mm | 50mm | 12mm | \$221.62 |
| 317-501-114 | CSN12-M06-A100-150 | M6 | 150mm | 50mm | 12mm | \$223.87 |
| 317-501-115 | CSN16-M08-A45-100 | M8 | 100mm | 55mm | 16mm | \$250.89 |
| 317-501-116 | CSN16-M08-A95-150 | M8 | 150mm | 55mm | 16mm | \$294.74 |
| 317-501-117 | CSN16-M08-A145-200 | M8 | 200mm | 55mm | 16mm | \$389.23 |
| 317-501-118 | CSN20-M10-A90-150 | M10 | 150mm | 60mm | 20mm | \$442.12 |
| 317-501-119 | CSN20-M10-A140-200 | M10 | 200mm | 60mm | 20mm | \$578.25 |
| 317-501-120 | CSN20-M10-A190-250 | M10 | 250mm | 60mm | 20mm | \$682.88 |
| 317-501-121 | CSN25-M12-A90-150 | M12 | 150mm | 60mm | 25mm | \$599.64 |
| 317-501-122 | CSN25-M12-A140-200 | M12 | 200mm | 60mm | 25mm | \$781.87 |
| 317-501-123 | CSN25-M12-A190-250 | M12 | 250mm | 60mm | 25mm | \$934.86 |
| 317-501-124 | CSN25-M12-A240-300 | M12 | 300mm | 60mm | 25mm | \$1,154.25 |
| 317-501-125 | CSN32-M16-A135-200 | M16 | 200mm | 65mm | 32mm | \$1,141.88 |
| 317-501-126 | CSN32-M16-A185-250 | M16 | 250mm | 65mm | 32mm | \$1,469.24 |
| 317-501-127 | CSN32-M16-A235-300 | M16 | 300mm | 65mm | 32mm | \$1,720.13 |
| 317-501-128 | CSN32-M16-A285-350 | M16 | 350mm | 65mm | 32mm | \$2,190.36 |
| 317-501-129 | CSN32-M16-A335-400 | M16 | 400mm | 65mm | 32mm | \$2,492.98 |

Screw-on Arbors - BT40, CAT40 & DIN40

| EDP Number | Description | Thread | L1 Length | D1 Ø | D3 Ø | Price |
|-----------------|--|--------|-----------|--------|------|-----------------|
| 417-BT40M0860 | BT40-SO-M08-60 THREADED (ARBOR-TAPERED) | M8 | 60mm | 15.4mm | 19mm | \$149.00 |
| 417-BT40M0890 | BT40-SO-M08-90 THREADED (ARBOR-TAPERED) | M8 | 90mm | 15.4mm | 24mm | \$149.00 |
| 417-BT40M08120 | BT40-SO-M08-120 THREADED (ARBOR-TAPERED) | M8 | 120mm | 15.4mm | 30mm | \$179.00 |
| 417-CAT40M0890 | CAT40-SO-M08-90 THREADED (ARBOR-TAPERED) | M8 | 90mm | 15.4mm | 30mm | \$149.00 |
| 417-CAT40M1090 | CAT40-SO-M10-90 THREADED (ARBOR-TAPERED) | M10 | 90mm | 19mm | 30mm | \$149.00 |
| 417-CAT40M10135 | CAT40-SO-M10-135 THREADED (ARBOR-TAPERED) | M10 | 135mm | 19mm | 36mm | \$179.00 |
| 417-CAT40M1290 | CAT40-SO-M12-90 THREADED (ARBOR-TAPERED) | M12 | 90mm | 24mm | 29mm | \$149.00 |
| 417-CAT40M12135 | CAT40-SO-M12-135 THREADED (ARBOR-TAPERED) | M12 | 135mm | 24mm | 39mm | \$179.00 |
| 417-CAT40M1690 | CAT40-SO-M16-90 THREADED (ARBOR-TAPERED) | M16 | 90mm | 29mm | 35mm | \$149.00 |
| 417-CAT40M16135 | CAT40-SO-M16-135 THREADED (ARBOR-TAPERED) | M16 | 135mm | 29mm | 41mm | \$179.00 |

