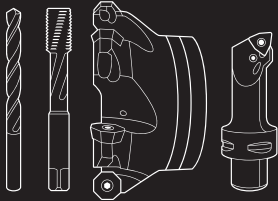


2021 Promotion

Free tool with insert purchase, details below



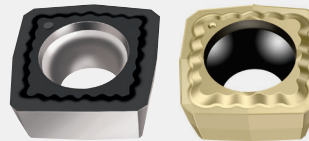
Strong performance
with four cutting edges

D3120

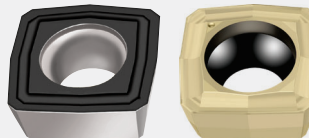
PROGRAM BENEFITS

- Same insert size for center and periphery insert pocket (operator convenience)
- Maximum process reliability due to easy chip removal
- Best protection against friction due to hardened and polished surfaces
- High stability in all working conditions
- Low cutting tool material costs due to four cutting edges
- Measuring collar for easy drill identification (even when assembled)

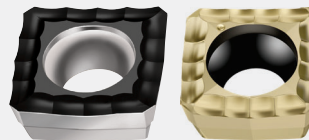
Powered by
Tiger-tec®Silver
Tiger-tec®Gold



A57 – The strong geometry



E57 – The universal geometry



E67 – The sharp geometry



Promotion Details

Buy any 30 inserts of P284* style and get the tool for free. Promotion runs from April 12th, 2021 to July 31st, 2021.

Use promo code **DRILLING2021**



Tool+Cutter
Specialists in Cutting Tools Since 1969




phone - 800-265-6056
email - support@toolandcutter.com









WWW.TOOLANDCUTTER.COM


Designation key for Walter drilling tools with indexable inserts

D	3	1	20	—	03	—	16.00	F25	—	P21
1	2	3	4	5	6	7	8	9		
1	2	3	4	5	6	7	8	9		
Tool group	Generation	Tool type	Tool type	Unit of Measure	Drilling depth	Cutting diameter/ clamping diameter	Shank type and size, cylindrical	Insert size		
D Drilling		1 Cylindrical drill 2 Chamfer drills	20 Indexable insert drill with square indexable insert 40 Indexable insert drill with P600x exchangeable insert	— Metric . Inch	02 $2 \times D_c$ 03 $3 \times D_c$ 04 $4 \times D_c$		F25 25 mm F32 32 mm F40 40 mm F26 1.000 inch F31 1.250 inch F38 1.500 inch	 P21 P284 Size 1 P25 P284 Size 7		
							A=Cylindrical shank F=Cylindrical shank with flat * shank sizes shown for example only			

Product range overview of indexable insert drills

			
Drilling depth	$2 \times D_c$	$3 \times D_c$	$4 \times D_c$
Designation	D3120	D3120	D3120
Dia. range [mm]	16-42	16-42	16-42
Dia. range [in]	—	0.750-1.500	0.750-1.500
			

Indexable inserts

Designation	Insert sizes	P		M			K			N		S			Stability of machine, workpiece and clamping arrangement					
		HC	HC	HC	HC	HC	HW	HW	HC	HC	HC									
		WKP25S	WKP35S	WSP45S	WSP45G	WXP40	WSP45S	WSP45G	WXP40	WAK15	WKP25S	WKP35S	WXP40	WK40	WK40	WSP45S	WSP45G	WXP40		
 P2840S-.N-A57	1-7	⊗	⊗	⊗	⊗	⊗	⊗	⊗	⊗	⊗	⊗	⊗	⊗	⊗	⊗	⊗	⊗	⊗	⊗	⊗
P2840S-.N-E67	1-7	⊗	⊗	⊗	⊗	⊗	⊗	⊗	⊗	⊗	⊗	⊗	⊗	⊗	⊗	⊗	⊗	⊗	⊗	⊗
P2841S-.N-A57	1-7	⊗	⊗	⊗	⊗	⊗	⊗	⊗	⊗	⊗	⊗	⊗	⊗	⊗	⊗	⊗	⊗	⊗	⊗	⊗
P2841S-.N-E57	1-7	⊗	⊗	⊗	⊗	⊗	⊗	⊗	⊗	⊗	⊗	⊗	⊗	⊗	⊗	⊗	⊗	⊗	⊗	⊗
P2841S-.N-E67	1-7	⊗	⊗	⊗	⊗	⊗	⊗	⊗	⊗	⊗	⊗	⊗	⊗	⊗	⊗	⊗	⊗	⊗	⊗	⊗

P2840. = Ground Insert
 P2841. = Pressed Insert
 A57, E57, E67 are different chip breaker geometries. See Walter Catalog for technical information
 Some geometry and grade combinations not available in all sizes

HC = Coated carbide
 HW = Uncoated carbide