

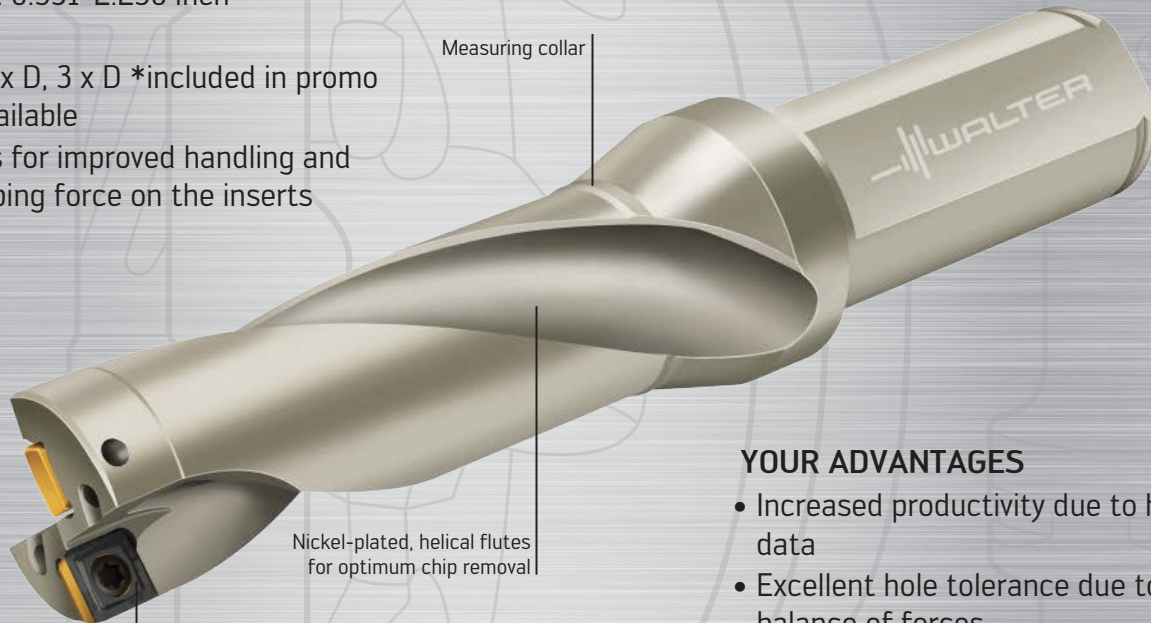
# Xtra-tec®

## Walter Xtra-tec® Insert Drill:

Very exact, very efficient, very economical

### THE TOOL

- Indexable insert drill
  - Indexible inserts with four cutting edges
- Diameter range: 0.531-2.250 inch
- Z = 1 effective
- Drilling depth 2 x D, 3 x D \*included in promo - other sizes available
- TorxPlus screws for improved handling and increased clamping force on the inserts



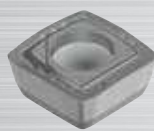
Optimum arrangement of inserts for balanced forces during machining

### YOUR ADVANTAGES

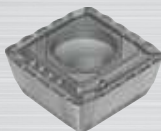
- Increased productivity due to higher cutting data
- Excellent hole tolerance due to optimum balance of forces
- Cost efficient operation
- Excellent surface finish from the wiper edge on the peripheral insert
- high process reliability due to TorxPlus insert clamping screw



Centre inserts



A57

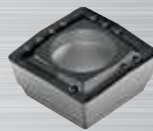


E67

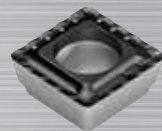
Outer inserts



A57



E57



E67

DCSENEEDDQQRDB

Walter competence brands